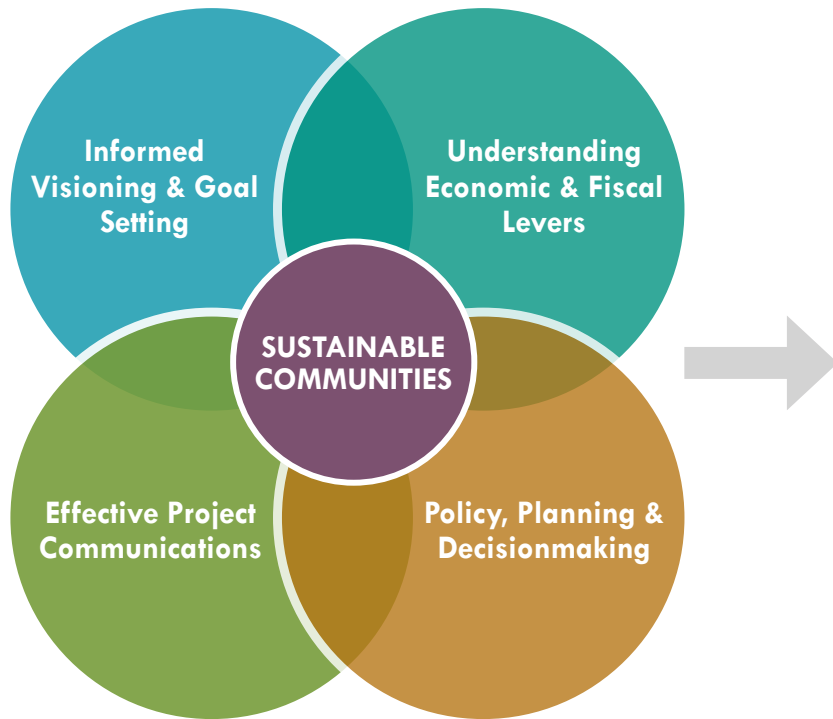


SUSTAINABLE COMMUNITIES

Connecting Vision to Action

Bringing Communities Together Around a Common Vision & Strategy

BERK works with communities to develop integrated solutions to support sustainable and equitable growth. Our practice synthesizes the interrelationships among land use, transportation, community and economic development, and fiscal sustainability. Our goal is to foster resilient communities that are able to anticipate challenges, navigate tradeoffs, and make wise long-term decisions.



SERVICES & PRODUCTS

INFORMED VISIONING & GOAL SETTING

- Citywide Strategic Plans
- Economic Development Plans
- Community Visioning

UNDERSTANDING ECONOMIC & FISCAL LEVERS

- Fiscal & Public Service Strategies
- Infrastructure Funding
- Market Studies
- Tax Burden Analysis

POLICY, PLANNING & DECISIONMAKING

- Comprehensive & Subarea Planning
- Planned Actions & Programmatic EISs
- Development Regulations
- Scenario Planning
- Policy & Program Development

EFFECTIVE PROJECT COMMUNICATIONS

- Facilitation
- Public & Stakeholder Engagement
- Geographic Information System (GIS)

OUTCOMES

- Engaged Communities & Partners
- Market Competitiveness & Fiscal Sustainability
- Effective Services & Catalyst Infrastructure Investments
Vibrant, Livable
- Neighborhoods
- Prosperity & Social Equity
- Environmental Stewardship

SUSTAINABLE COMMUNITIES

Connecting Vision to Action

Contact Us



LISA GRUETER, AICP

Planning Team Lead | lisa@berkconsulting.com

Lisa is a senior land use planner with more than twenty five years of experience in policy planning for the public and private sectors. Her expertise includes land use planning under the state's GMA, SEPA, SMA, and the integration of these laws into cohesive, implementable planning policies.

To learn more about our creative staff, please visit www.berkconsulting.com

- Andrew Bjorn, AICP
- Erika Rhett, AICP
- Jennifer Tippins
- Jessie Hartmann
- Kevin Gifford
- Kevin Ramsey, PhD
- Melanie Mayock
- Radhika Nair

Housing Needs Assessments

BERK has worked with communities throughout the State to develop housing needs assessments and market analysis related to housing affordability and development as well as Comprehensive Plan Housing Elements. Housing needs assessments can provide to communities facing housing affordability challenges and the ways in which cities and counties are using their needs assessments to inform local policy responses. Example clients include the cities of Auburn, Bellevue, Ellensburg, Leavenworth, Walla Walla, and Wenatchee.

Parks Planning + Financial Analysis

BERK loves parks. We have experience in parks system planning, stakeholder outreach and engagement, market and cost recovery analysis, capital facilities planning, and funding strategies. BERK is developing more strategically-oriented Parks, Recreation, and Open Space Plans, impact fees, and market studies for cities, counties, and park districts. Example clients include King County Parks & Recreation, Pierce County Parks and Recreation, and the cities of Issaquah, Mercer Island, Mountlake Terrace, Seattle and Sumner.

Voluntary Stewardship Program Development

Since 2014, BERK has been working with Eastern Washington counties to develop some of the first Voluntary Stewardship Programs in the State. Working with multi-stakeholder work groups, BERK has developed VSP Work Plans to support agricultural viability and critical areas protection through voluntary actions by agricultural producers. BERK has worked with Benton, Chelan, and Yakima counties on these efforts.

Community Planning

BERK provides growth management and community planning expertise at all scales including, community comprehensive plans, subarea plans, shoreline plans, development regulations, and docket applications/land use permit review. We help conduct visioning processes, prepare policies and development regulations such as zoning, and implementation strategies such as capital investments. To support area-wide planning and informed decision-making, BERK often prepares trends analyses, fiscal and economic evaluations, growth projections, and SEPA strategies, including programmatic and planned action environmental review. In the last five years, BERK planners have worked collaboratively with counties and cities across the state on about 20 comprehensive plans, six subarea plans, 10 shoreline master programs, four zoning and municipal code efforts, and about 15 planned action or programmatic environmental impact statements.

